

BENOKRAITIS

# SOC<sup>5</sup>

INTRODUCTION TO SOCIOLOGY



# 1

## Thinking Like a Sociologist



NOW WITH SOC ONLINE

# Introductions

Instructor:

Jim Fisher, PhD, MRP, AIPC

395 State Street

Ellsworth, ME 04605

[jfisher@emcc.edu](mailto:jfisher@emcc.edu)

[James.fisher1@maine.edu](mailto:James.fisher1@maine.edu)

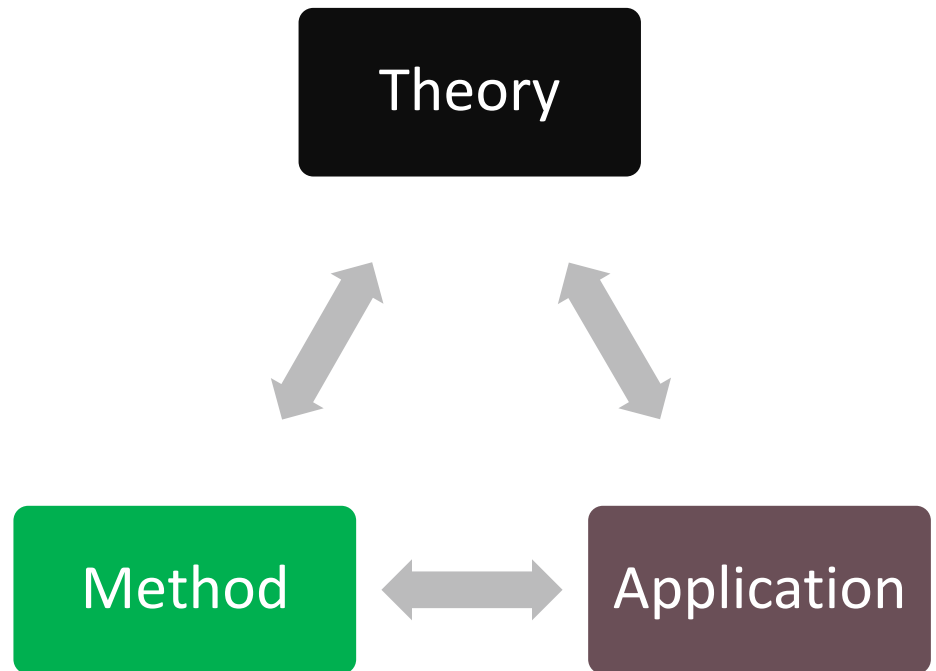
[jimfisher101@gmail.com](mailto:jimfisher101@gmail.com)

(207) 370-4450

[www.madfisher.info/soc](http://www.madfisher.info/soc)

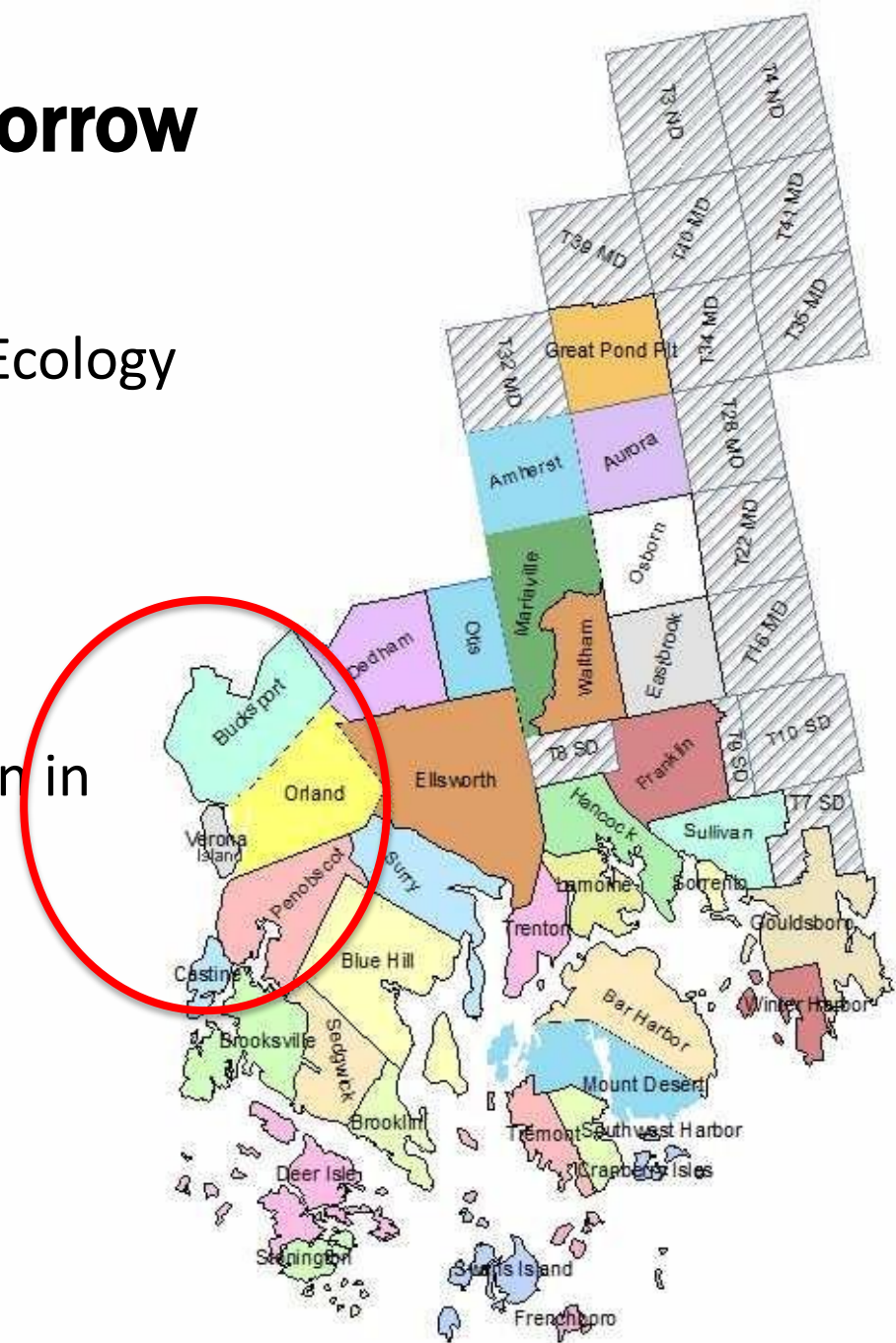
# Introductions

- **Who are you?**
  - *Where were you raised?*
  - *Where are you living now?*
- **Why are you here?**
- **Syllabus**
- **Objectives**
- **Expectations**
  - *Timeline*
  - *Rules, Rules and more Rules*



# Bucksport Bay Tomorrow

- Sociological Human Ecology
  - *Population*
  - *Organization*
  - *Environment*
  - *Technology*
- Where have you been in Hancock County?
  - *Towns*
  - *Parks*
  - *Schools*
  - *Hospitals*





# LEARNING OUTCOMES

- 1 Explain what sociology is and how it differs from other social sciences and common sense
- 2 Explain how and why a sociological imagination helps us understand society
- 3 Identify and illustrate why it is worthwhile to study sociology
- 4 Describe and explain the origins of sociology, why sociology developed, and its most influential early theorists
- 5 Compare, illustrate, and evaluate the four contemporary sociological perspectives



# Sociology

- Systematic study of human behavior in society.
  - *Implies that social behavior is regular and patterned*
  - *Takes place between individuals, small groups, large organizations, and societies*

# Sociology: Application

## TRUE OR FALSE?

Everybody Knows That ...

1. The death penalty reduces crime.
2. Women's earnings are now similar to men's, especially in high-income jobs.
3. People age 65 and older make up the largest group of those who are poor.
4. There are more married than unmarried U.S. adults.
5. Divorce rates are higher today than in the past.
6. Latinos are the fastest-growing racial-ethnic group in the United States.
7. The best way to get an accurate measure of public opinion is to poll as many people as possible.
8. Illegal drugs are the biggest health hazard.

# Differentiating Common Sense and Sociology

## Common sense

- Subjective
- Ignores facts
- Varies across groups and cultures
- Based on myths and misconceptions

## Sociology

- Examines claims and beliefs critically
- Considers various points of view
- Enables individuals to move beyond established ways of thinking
- Analyzes how social context influences people's lives

# Sociological Imagination

- Ability to see the relationship between individual experiences and social influences
- **Microsociology:** Examines the patterns of individual's social interaction in specific settings
- **Macrosociology:** Examines large-scale patterns and processes that characterize society as a whole

# Sociological Imagination: Intersection of History and Biography

## Trafficking victims found in remote Scottish communities

🕒 29 August 2017 | Scotland

f 🐦 💬 ✉️ Share



Victims of human trafficking have been identified in small and remote Scottish communities including Alva, Annan and Fort William, ministers have said.

# Macrosociology

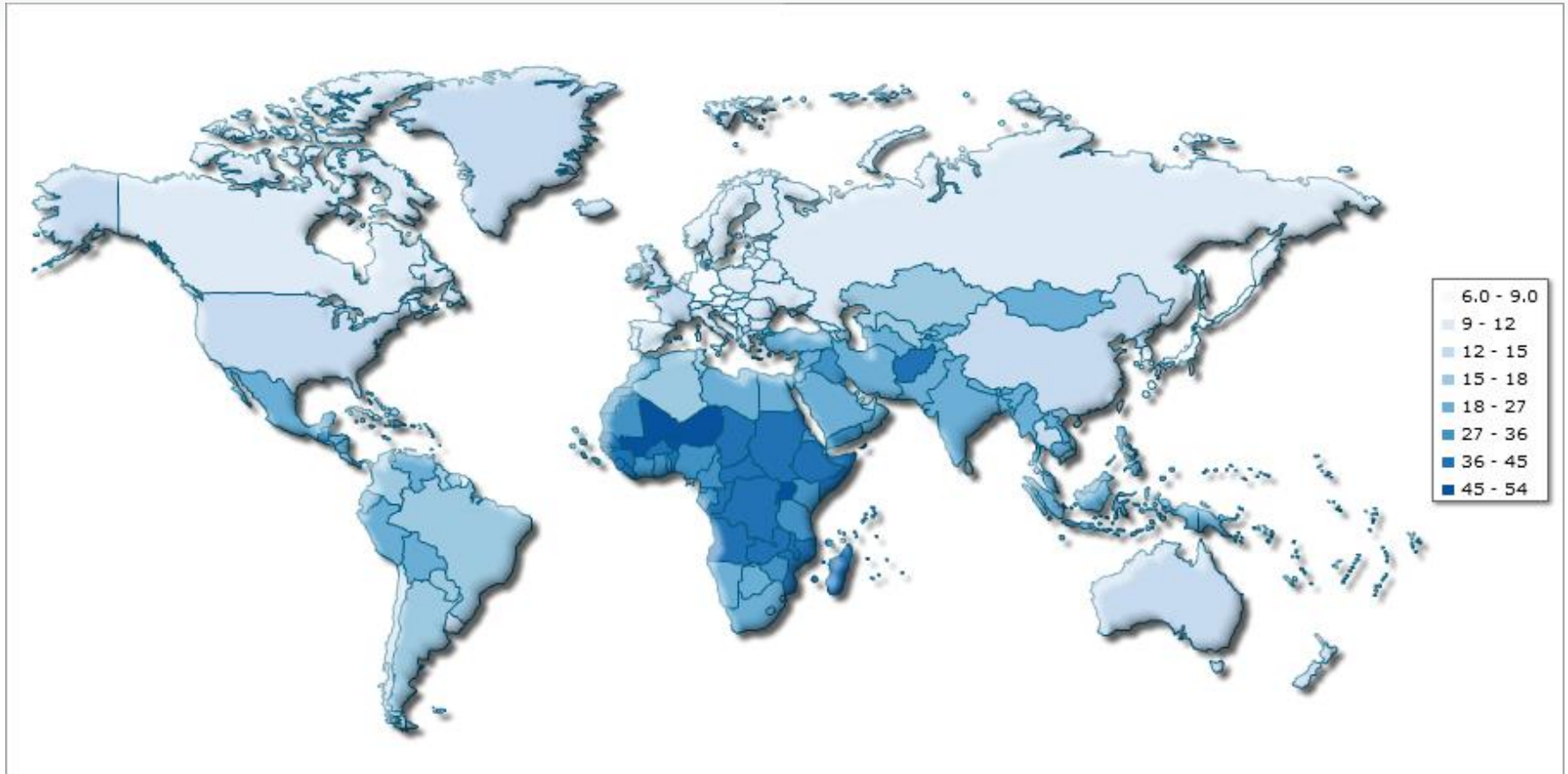
## Examines large-scale patterns

Rank	Country	CBR
1	<a href="#">Niger</a>	50.54
2	<a href="#">Uganda</a>	47.49
3	<a href="#">Mali</a>	45.62
88	<a href="#">Venezuela</a>	20.10
89	<a href="#">Ecuador</a>	19.96
90	<a href="#">Dominican Republic</a>	19.67
149	<a href="#">United States</a>	13.83
150	<a href="#">New Zealand</a>	13.68
220	<a href="#">Japan</a>	7.31

Crude Birth Rate = Births / Population \* 1,000

# Macrosociology

Examines large-scale patterns



# Importance of Studying Sociology

- Helps make informed decisions
- Aids in understanding diversity
- Shapes social and public policies and practices
- Develops critical thinking
- Expands career opportunities



Suzanne Tucker/Shutterstock.com

**Table 1.1****What Is Critical Sociological Thinking?**

**Critical sociological thinking requires a combination of skills. Some of the basic elements include the ability to:**

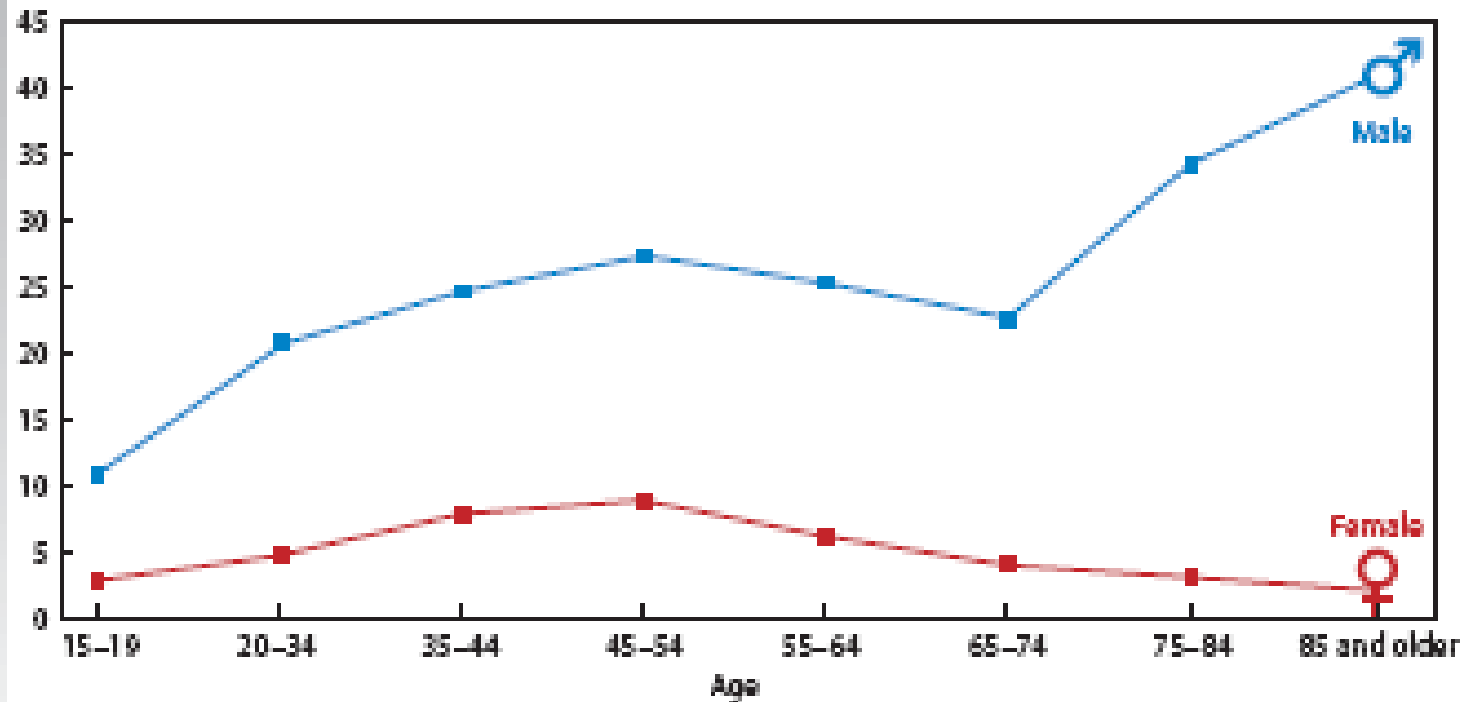
- rely on reason rather than emotion
- ask questions, avoid snap judgments, and examine popular and unpopular beliefs
- recognize one's own and others' assumptions, prejudices, and points of view
- remain open to alternative explanations and theories
- require and examine competing evidence (see Chapter 2)
- understand how public issues affect private troubles

# Who commits suicide?

FIGURE 1.1

## U.S. Suicide Rates, by Sex and Age

Suicide deaths per 100,000 population



Source: Based on Crosby et al 2011: 57-58.

# Computer Applications for Sociology

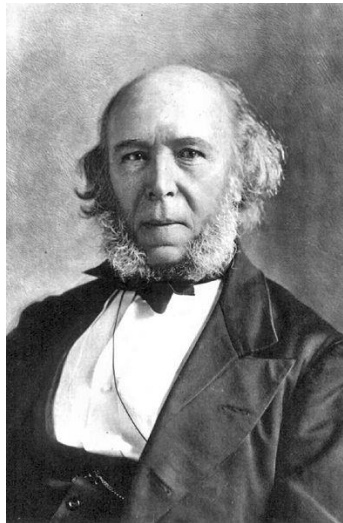
- **Google Suite**
  - *Drive – File Folder*
  - *Doc – Word Processing like Word*
  - *Sheet – Spreadsheet for data, math and graphs like Excel*
  - *Draw – Illustration or Paint*
  - *Map – Make maps*
  - *Slides – Presentation program – like Powerpoint*
- Needed: Google ID (gmail)

# Origins of Sociological Theory

- Theories are developed to understand human behavior
  - **Theory:** *Set of statements that explains why phenomenon occurs*
  - **Empirical information:** *information based on observations, experiments, or experiences*

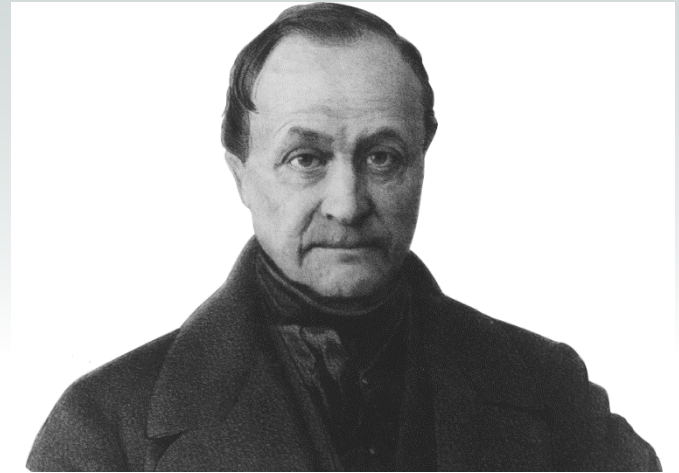
# Origins of Sociology

## Famous Sociologists



# Early Sociological Theorists

- Auguste Comte
  - *Father of sociology*
  - *Advocated **empirical** study of society*
- Harriet Martineau
  - *Translated and disseminated Comte's work*
  - *Emphasized systematic data collection*



Auguste Comte (1798 – 1857)  
[The Course in Positive Philosophy](#)

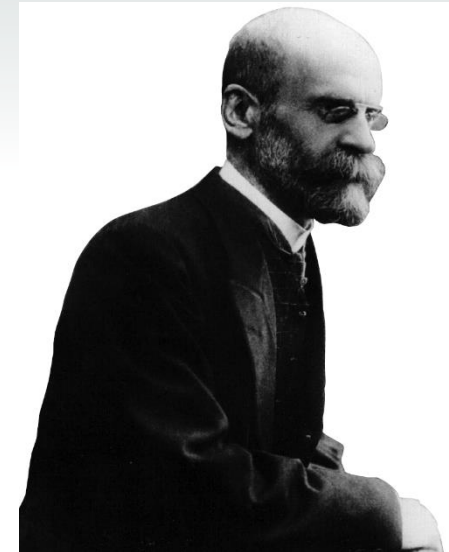


Spencer Arnold/Hulton Archive/Getty Images

**Harriet Martineau**  
**(1802 – 1876)**

# Early Sociological Theorists (continued 1)

- Émile Durkheim
  - *Used scientific methods to study society*
  - *Analyzed social facts, social solidarity, and division of labor*
  - *Conducted study of suicide and social integration*

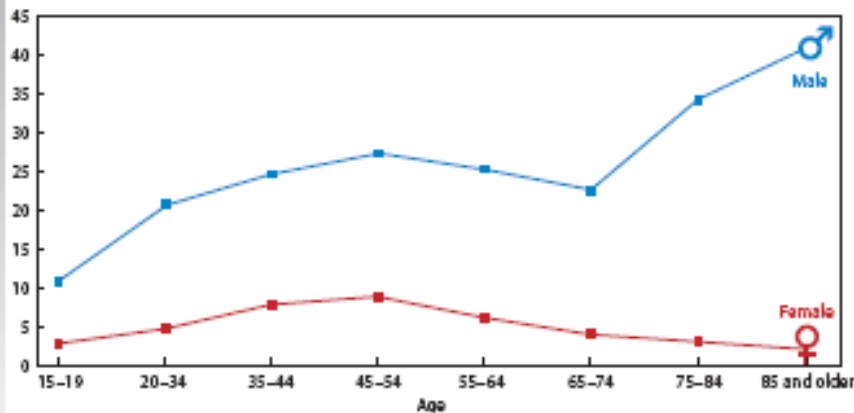


Pictorial Press Ltd/Alamy

FIGURE 1.1

## U.S. Suicide Rates, by Sex and Age

Suicide deaths per 100,000 population

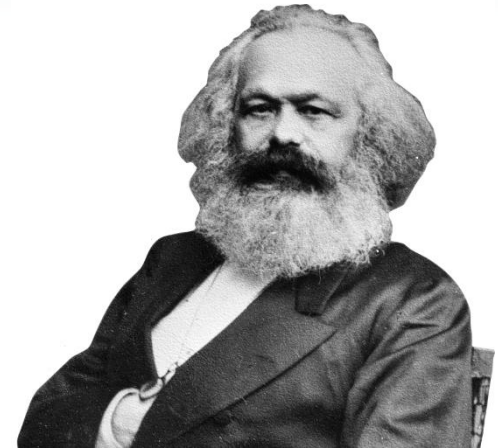


Source: Based on O'Leary et al. 2011: 57-58.

Émile Durkheim  
 (1858–1917)  
 University of Bordeaux  
Rules of the Sociological Method

# Early Sociological Theorists (continued 1)

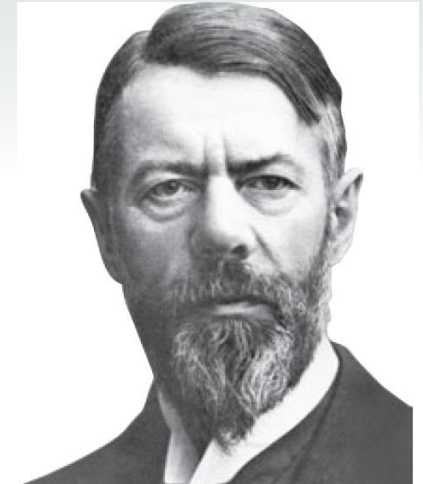
- Karl Marx
  - *Analyzed the Industrial Revolution*
  - *Studied capitalism, class conflict, and alienation*
  - *Author of*
    - *The Communist Manifesto*
    - *Das Kapital*
  - *Viewed development of capitalism as a social change*



Karl Marx (1818 – 1883)  
Germany - England

# Early Sociological Theorists (continued 2)

- Max Weber
  - *Social organization*
  - *Subjective understanding of behavior*
  - *Value-free sociology*
- Jane Addams
  - *Leader in the women's suffrage movement*
  - *Awarded Nobel peace prize*



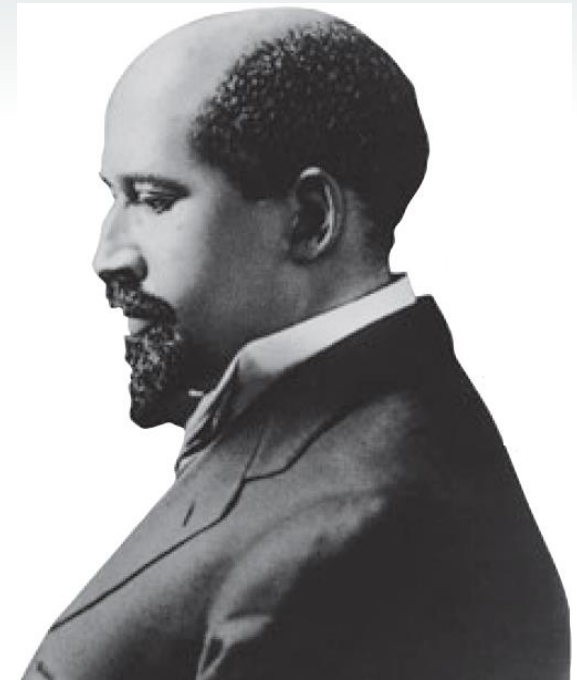
Hulton Archive/Getty Images



Wallace Kirkland/Time Life Pictures/Getty Images

# Early Sociological Theorists (continued 3)

- W.E.B Du Bois
  - *Examined oppressive effects of race and class*
  - *Advocated women's rights*
  - *Played a key role in reshaping black-white relations in America*



Hulton Archive/Getty Images

# Contemporary Sociological Theories

Functionalism

Conflict theory

Feminist theory

Symbolic interaction

Other theoretical approaches

# Functionalism

- **Functions** are purposes and activities to meet different needs that contribute to a society's stability.
- **Manifest functions** are intended and recognized.
- **Latent functions** are unintended and unrecognized.
- **Dysfunctions** have negative impacts.



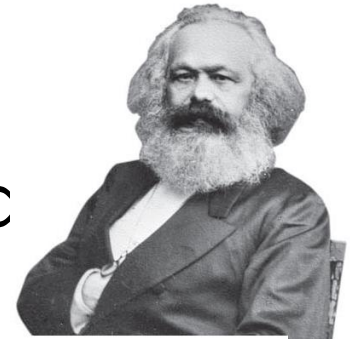
Robert Merton  
(1910 – 2003)  
Columbia University

# Functionalism: Application

- A school uniform
  - *What are the manifest functions?*
  - *What are the latent functions?*
  - *What are the dysfunctions?*
- A fast food restaurant
  - *What are the manifest functions?*
  - *What are the latent functions?*
  - *What are the dysfunctions?*

# Conflict Theory

- **Conflict theory** examines the ways in which groups disagree, struggle over power, and compete for scarce resources.
- Karl Marx predicted that conflict would result from widespread economic inequality.
- Examines how and why groups disagree, struggle over power, and compete for scarce resources



(1818 -1883)

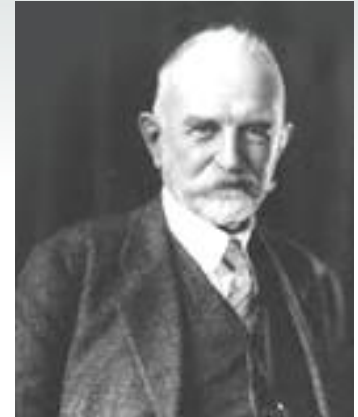
Communist Manifesto

# Feminist Theories

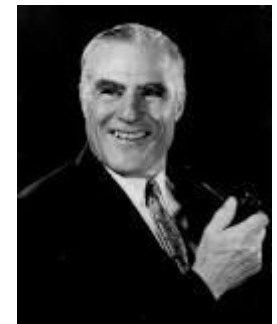
- Examine women's social, economic, and political inequality
- Consider gender an important variable in sociological research
- Include many perspectives
  - *Liberal, radical, and global feminism*
- Do not consider different points of view
- Downplay social class inequality

# Symbolic Interactionism

- Examines individual's everyday behavior through the communication of:
  - Knowledge, ideas, beliefs, and attitudes
- Examines communication via symbols (words, gestures, pictures)
- Meanings are handled in, and modified through, an interpretive process a person uses in dealing with the things he or she encounters. (Blumer, 1969)



George Herbert Mead  
(1863 – 1931)



Herbert George Blumer  
(1900 – 1987)

Table 1.2

# Leading Contemporary Perspectives in Sociology

THEORETICAL PERSPECTIVE	FUNCTIONALISM	CONFLICT	FEMINIST	SYMBOLIC INTERACTION
Level of Analysis	Macro	Macro	Macro and Micro	Micro
Key Points	<ul style="list-style-type: none"> <li>• Society is composed of interrelated, mutually dependent parts.</li> <li>• Structures and functions maintain a society's or group's stability, cohesion, and continuity.</li> <li>• Dysfunctional activities that threaten a society's or group's survival are controlled or eliminated.</li> </ul>	<ul style="list-style-type: none"> <li>• Life is a continuous struggle between the haves and the have-nots.</li> <li>• People compete for limited resources that are controlled by a small number of powerful groups.</li> <li>• Society is based on inequality in terms of ethnicity, race, social class, and gender.</li> </ul>	<ul style="list-style-type: none"> <li>• Women experience widespread inequality in society because, as a group, they have little power.</li> <li>• Gender, ethnicity, race, age, sexual orientation, and social class—rather than a person's intelligence and ability—explain many of our social interactions and lack of access to resources.</li> <li>• Social change is possible only if we change our institutional structures and our day-to-day interactions.</li> </ul>	<ul style="list-style-type: none"> <li>• People act on the basis of the meaning they attribute to others. Meaning grows out of the social interaction that we have with others.</li> <li>• People continuously reinterpret and reevaluate their knowledge and information in their everyday encounters.</li> </ul>

Table 1.2

# Leading Contemporary Perspectives in Sociology (continued)

THEORETICAL PERSPECTIVE	FUNCTIONALISM	CONFLICT	FEMINIST	SYMBOLIC INTERACTION
<b>Key Questions</b>	<ul style="list-style-type: none"> <li>• What holds society together? How does it work?</li> <li>• What is the structure of society?</li> <li>• What functions does society perform?</li> <li>• How do structures and functions contribute to social stability?</li> </ul>	<ul style="list-style-type: none"> <li>• How are resources distributed in a society?</li> <li>• Who benefits when resources are limited? Who loses?</li> <li>• How do those in power protect their privileges?</li> <li>• When does conflict lead to social change?</li> </ul>	<ul style="list-style-type: none"> <li>• Do men and women experience social situations in the same way?</li> <li>• How does our everyday behavior reflect our gender, social class, age, race, ethnicity, sexual orientation, and other factors?</li> <li>• How do macro structures (such as the economy and the political system) shape our opportunities?</li> <li>• How can we change current structures through social activism?</li> </ul>	<ul style="list-style-type: none"> <li>• How does social interaction influence our behavior?</li> <li>• How do social interactions change across situations and between people?</li> <li>• Why does our behavior change because of our beliefs, attitudes, values, and roles?</li> <li>• How is “right” and “wrong” behavior defined, interpreted, reinforced, or discouraged?</li> </ul>
<b>Example</b>	<ul style="list-style-type: none"> <li>• A college education increases one’s job opportunities and income.</li> </ul>	<ul style="list-style-type: none"> <li>• Most low-income families can’t afford to pay for a college education.</li> </ul>	<ul style="list-style-type: none"> <li>• Gender affects decisions about a major and which college to attend.</li> </ul>	<ul style="list-style-type: none"> <li>• College students succeed or fail based on their degree of academic engagement.</li> </ul>

# Other Theoretical Approaches

- New theoretical perspectives
  - *Ever-changing nature of society*
  - *Example - Postmodern theory*
  - *New Urbanism*
- Subfields of sociology
  - *Socialization*
  - *Deviance*
  - *Social stratification*
- No single theory explains life completely

# Contemporary Sociological Theory: Application

- How do humans mark their territory?
- How do we define the different racial categories that people are assigned?
- How do we know how to feel about a war?

# Contemporary Sociological Theory: Application (continued)

- Functionalism - How does structure help society work?
- Conflict - How are resources distributed?
- Feminist - How does life reflect gender?
- Interactionism - How do we construct meaning through symbols?



# Chapter Review

- What is sociology?
- Why do we need sociology?
- What is the sociological imagination?
- Describe the contributions of the early social thinkers.
- What are the contemporary sociological theories?

# KEY TERMS

- Sociology
- Sociological imagination
- Microsociology
- Macrosociology
- Theory
- Empirical
- Social facts
- Social solidarity
- Division of labor
- Capitalism
- Alienation
- Value free
- Functionalism
- Dysfunctions
- Manifest functions
- Latent functions
- Conflict theory
- Feminist theories
- Symbolic interactionism
- Social interaction



# SUMMARY

- Sociology is the systematic study of human behavior
- Sociological imagination can give more control over lives
- Sociology offers explanations that can greatly improve the quality of everyday life
- Sociologists use more than one theory to explain behavior